

CERTIFICATE OF LOCATION OF GOVERNMENT CORNER

EAST QUARTER Corner of Section 30, Township 105, Range 41, 5TH P.M.

STATE OF MINNESOTA, County of MURRAY

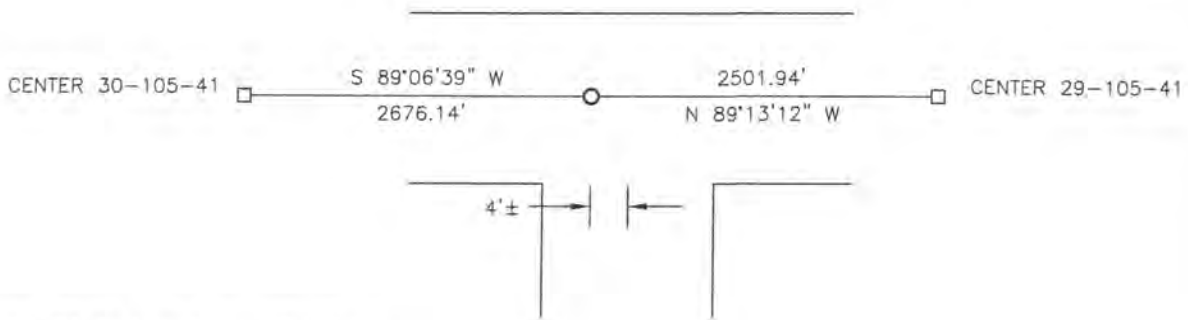
At the corner location shown on the sketch:

On 06-19-2017 found a DNR MONUMENT
DATE

left monument as found, lowered monument, removed monument (explain)

On 07-17-2018 placed a SURVEY SPIKE WITH SEAL #43844.
DATE

SKETCH OF REFERENCE TIES

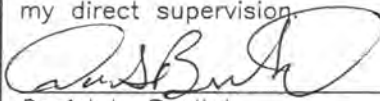


Minnesota State Plane Coordinate
 System Murray County Datum
 NAD83 (1996)

N: 108112.207
 E: 490228.775

Statement of evidence relative to this corner location is on back of page.

I hereby certify that this document and the data contained herein was prepared by me or under my direct supervision.



Daniel L. Bueltel

License No. 43844

8/28/18
 DATE

Statement of Evidence

In 1861, Wellman and Smoot did the original subdivision of the township.

In 1895, B.W. Woolsteincraft found a government mound at the corner.

In 1934, F. A. March found a stone at the corner

On May 5, 1988, the Murray County Highway Department found a field stone at the corner. They set a steel pin over the stone.

On June 6, 1988, John Madsen Land Surveying found an 1" rod at the corner. The iron was set by the Murray County Highway Department.

On May 20, 1996 the DNR found a $\frac{1}{2}$ " iron at the corner. It matched the 1988 ties.

On September 8, 2012, the Murray County Highway Department found an iron with aluminum cap stamped "DNR Survey Marker".

On June 19, 2017, Bueltel-Moseng Land Surveying found a DNR monument at the corner.

On July 17, 2018, Bueltel-Moseng Land Surveying set a survey spike with seal #43844 at the road surface after construction. It is in the center of the east-west road and $4' \pm$ west of the center of the road to the south.